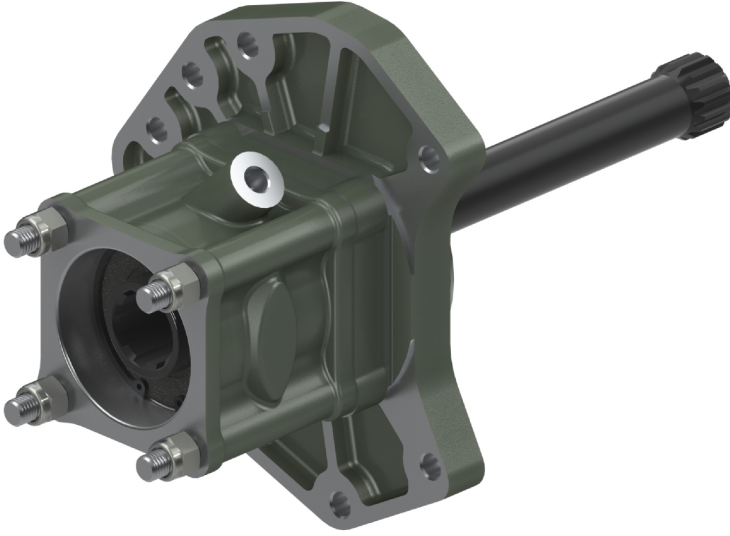


PTO MERCEDES AXOR G 210-211 ISO (TEK DİŞLİ)  
PTO MERCEDES AXOR G 210-211 ISO (SINGLE GEAR)

PTO KODU: 20811KOHİR  
PTO CODE:

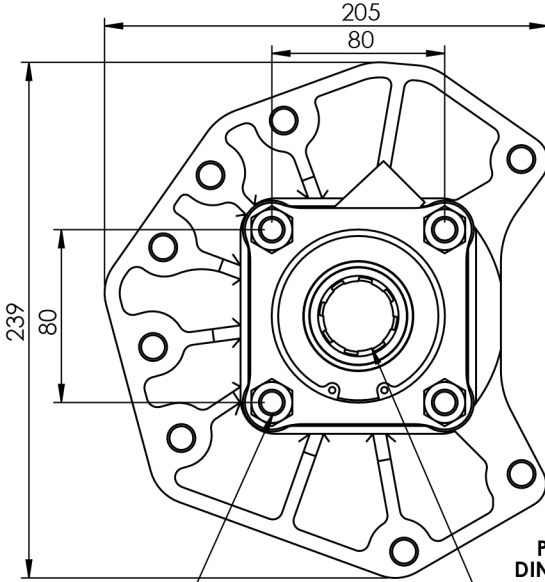


ŞANZİMAN TİPİ:  
GEARBOX TYPE:

G 131-9/14,57-1,0, G 210-16/14,2, G 211-16/17,0, G 221-9, G 231-16, G 240-16/11,7, G 241, G 260-16, G 280, G 281, G 330-12/11,63-16,17

ARAÇLAR:  
USED VEHICLES:

MERCEDES: ATEGO 1833, ATEGO 2533, AXOR 1480L, AXOR 1843LS, AXOR 1628, AXOR 1833, AXOR 1841, AXOR 1858, AXOR 2543, AXOR 3028, AXOR 3228, AXOR 3235, AXOR 3326, AXOR 4040, AXOR 4141, AXOR 4148, AXOR 3225, AXOR 3340, AXOR 4038, AXOR 2628, AXOR 1824

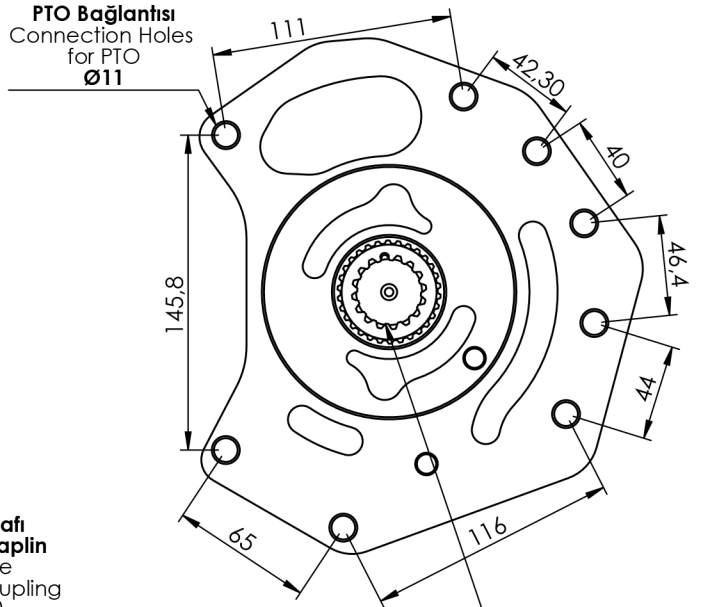


Pompa Bağlantısı  
Connection Holes  
for Pump  
M12x1.75

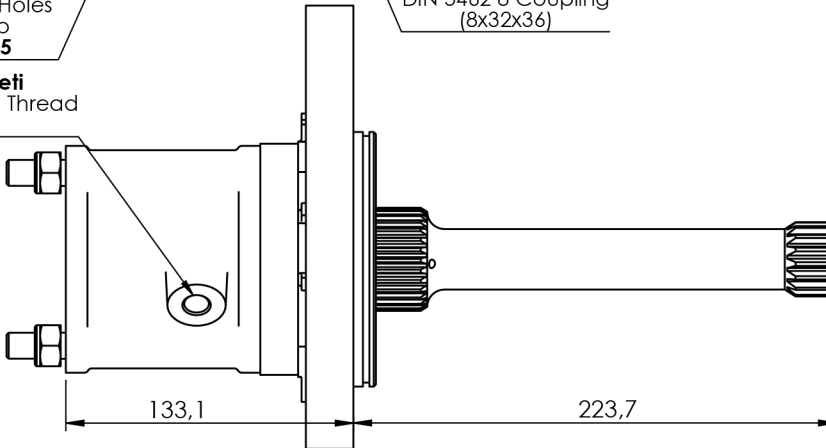
Hava Soketi  
Air Connection Thread  
G 1/4

Pompa Tarafı  
DIN 5462 8 Kaplin  
Pump Side  
DIN 5462 8 Coupling  
(8x32x36)

PTO Bağlantısı  
Connection Holes  
for PTO  
Ø11



ŞANZİMAN TARAFI  
TRANSMISSION SIDE  
Z=16



ÇIKIŞ TORKU OUTPUT TORQUE	GÜÇ POWER	AKTARIM ORANI TRANSMISSION RATIO	BAĞLANTI ŞEKLİ MOUNTING TYPE	KONTROL TİPİ CONTROL TYPE	DÖNÜŞ YÖNÜ ROTATION	AĞIRLIK WEIGHT
230,5 Nm	12 Kw	1:1	Kuyruk/Rear	Pnömatik/Pneumatic	Sağ/Right(cw)	10,8 Kg

\*Bu katalogta bulunan resim ve çizimlerin tüm hakları ZİYA USTA LTD. ŞTİ.'ye aittir. Önceden haber verilmeksizin değişiklik yapma hakkı saklıdır.

\* Rights of the photographs and drawings that existing in catalogue belongs to ZİYA USTA Co. Ltd. Can be changed without noticing.