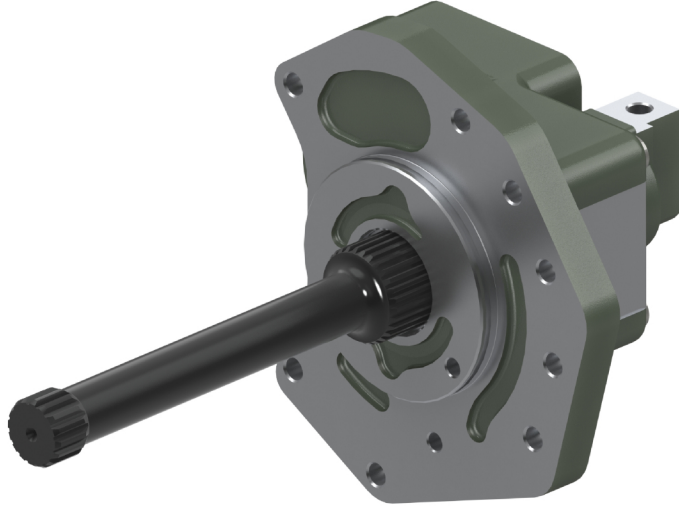


PTO AXOR 18.40 ÇİFT DİŞLİ HAVA YASTIKLI KEÇELİ UZUN
PTO AXOR 18.40 AIR-CUSHIONED LONG (DOUBLE GEAR)

PTO KODU: 20816KOHIL
PTO CODE:

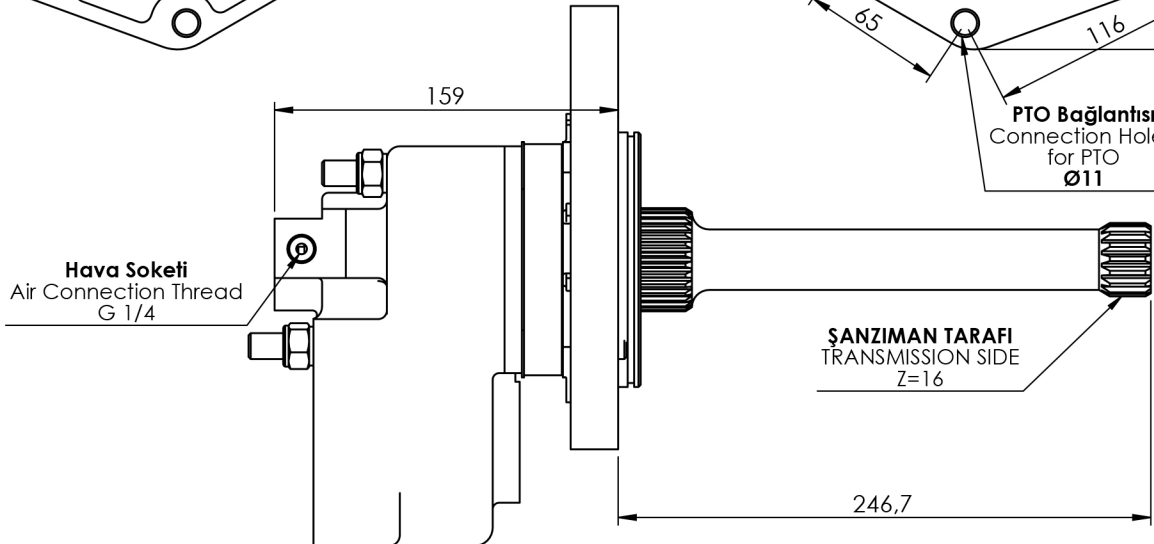
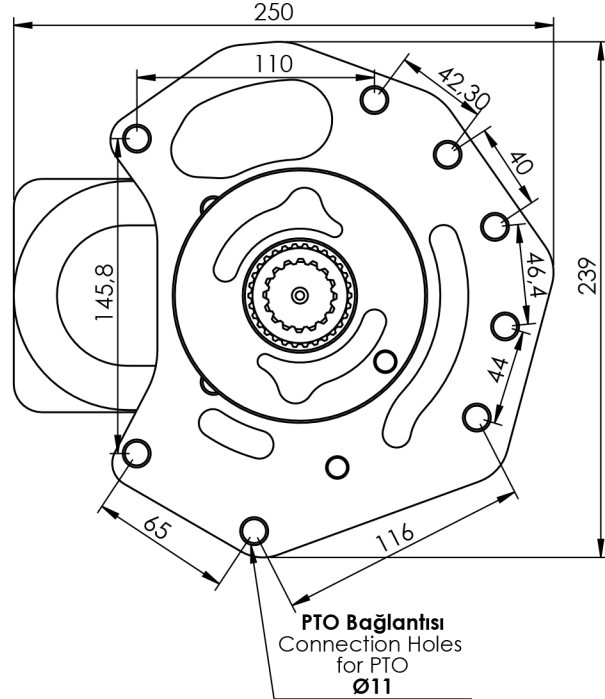
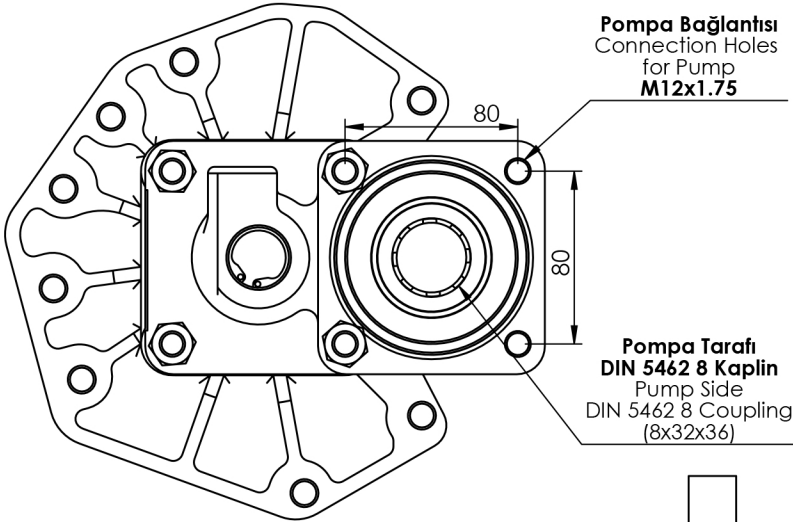


ŞANZİMAN TİPİ:
GEARBOX TYPE:

G 131-9/14,57-1,0 (RETARDER), G 210-16/14,2 (RETARDER), G 211-16/17,0 (RETARDER), G 221-9 (RETARDER), G 231-16 (RETARDER), G 240-16/11,7 (RETARDER), G 241 (RETARDER), G 260-16 (RETARDER), G 280 (RETARDER), G 281 (RETARDER), G 330-12/11,63-16,17 (RETARDER)

ARAÇLAR:
USED VEHICLES:

MERCEDES: AXOR 1480L, ATEGO 1833, ATEGO 2533, AXOR 1843LS, AXOR 1628, AXOR 1833, AXOR 1841, AXOR 1858, AXOR 2543, AXOR 3028, AXOR 3228, AXOR 3235, AXOR3326, AXOR 4040, AXOR 4141, AXOR 4148, AXOR 3225, AXOR 3340, AXOR 4038, AXOR 2628, AXOR 1824



ÇIKIŞ TORKU OUTPUT TORQUE	GÜÇ POWER	AKTARIM ORANI TRANSMISSION RATIO	BAĞLANTI ŞEKLİ MOUNTING TYPE	KONTROL TİPİ CONTROL TYPE	DÖNÜŞ YÖNÜ ROTATION	AĞIRLIK WEIGHT
286 Nm	20,3 Kw	1:1	Kuyruk/Rear	Pnömatik/Pneumatic	Sol/Left(ccw)	18,5 Kg

*Bu katalogta bulunan resim ve çizimlerin tüm hakları ZİYA USTA LTD. ŞTİ.'ye aittir. Önceden haber vermesizin değişikliği yapma hakkı saklıdır.

* Rights of the photographs and drawings that existing in catalogue belongs to ZİYA USTA Co. Ltd. Can be changed without noticing.